

# Time Out

## New York

The obsessive guide to impulsive entertainment

April 18-25, 2002 Issue No. 342 \$2.99

Everything must go!

# SPRING CLEANING

How to get rid of...

- Old furniture, clothes and computers
  - Annoying telemarketers and spam
  - Dead pets, tired friends and more
- PLUS** Earn cash from your trash

### JAM AND EGGS

Our music and food critics rate NYC's jazz brunches

### CASH MONEY ALL-STARS

Springtime walks for charity

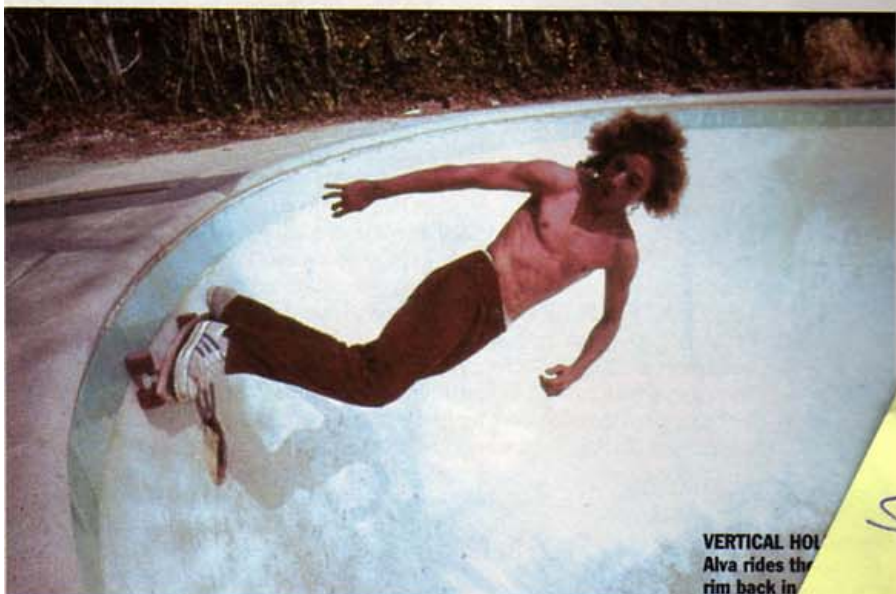
### THE KINDER, GENTLER...

Elvis Costello on the Hot Seat

..... *Louie Louie*

Professional Skateboarder

louiemint@aol.com  
646.221.4652

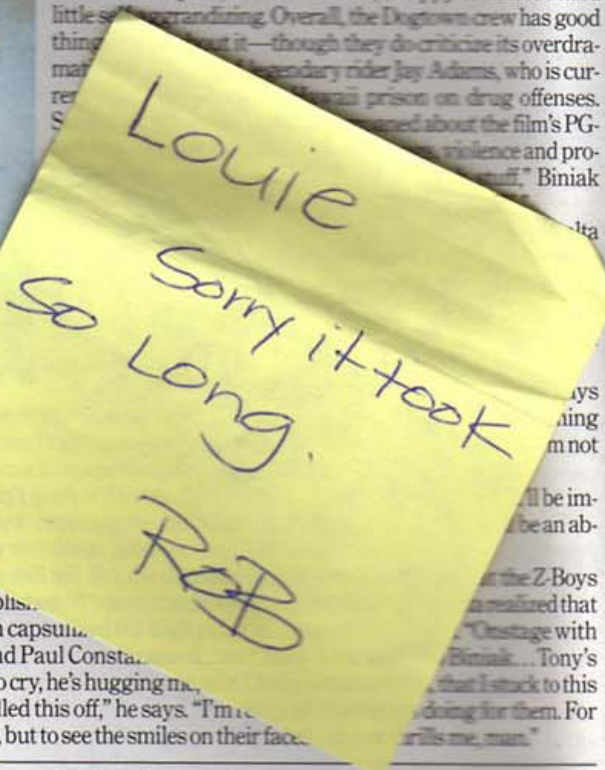


VERTICAL HOLD  
Alva rides the  
rim back in

But as the film's popularity builds, Friedman isn't the only one making demands. Peggy Oki, contacted in Australia via e-mail, declined to be quoted in this story without a guarantee that her website (which mostly hawks her marine-life landscape paintings) would be mentioned. In similar fashion, Friedman agreed to sell *TONY* the rights to print one of his photos only under the condition that the magazine plug his new book, *Dogtown—The Legend of the Z-Boys*. "If some of us seem abrasive, or not very cooperative, it's only because Sony has not paid us anything and is exploitative and rude," Friedman explains. SPC co-president Tom Bernard responds, "It's unfortunate that Glen Friedman has alienated himself from the producers and directors of the movie, who are the people who would pay him. Sony Pictures Classics has nothing to do with the payment, and has no interaction with Glen Friedman." (Friedman admits that he received "a very minimal fee" when *Dogtown* was "still an independent film," though not from SPC.) Although it has no official connection to

the documentary, Friedman's book functions as a bibliographic companion: It reprints nearly all of the articles that Stecyk (who co-wrote the *Dogtown and Z-Boys* script with Peralta, and declined to be interviewed for this story) wrote about the Zephyr team for *Skateboarder* during the '70s; it also contains nearly 400 of Friedman's previously unpublished photos, many of which also appear in the film.

Like its subjects, the movie is fast, scrappy and more than a little self-indulgent. Overall, the *Dogtown* crew has good things to say about it—though they do criticize its over-dramatic treatment of the secondary rider Jay Adams, who is currently in prison on drug offenses. "I was surprised about the film's PG-13 rating," says Biniak. "It's violence and profanity, but it's not that bad."



*Dogtown and Z-Boys* is out April 26.

## Park and ride

At the city's three terrain lots, it's skate or die **By Rob Erickson**

For those with the chutzpah to dodge cabbies, people, bikes, dogs and a zillion other obstacles, NYC is one endless skateboard park (just be sure to stay off the forbidden sidewalks). But if you prefer a little less clutter in your air, you'll want to hit a legit skate-rat zone. NYC's five boroughs currently have three, with terrain from beginner to expert and skaters from old school to no school. Now go shred.

### Extreme Park at Chelsea Piers

"It's a safe place that caters to every age and type of skater," says Luiz Louie, an instructor here, who has taught five-year-old kids screaming "Tony Hawk!" and brittle-boned stockbrokers alike to ride the ramps. Sessions at the 20,000-square-foot park are open to both inline skaters and asphalt surfers, but the latter dominate the banks and ledges. The course, open four years, has recently been redesigned, and you can now break your head on a miniramp, launch box or wall ride in addition to the old quarter pipes. Skaters must buy a \$10 Extreme Card and complete a waiver for entry (those under 18 must have a parent's signature); sessions are \$12.50 for 3 to 5 hours, depending on the day, or \$19 for all-day (10am to 7pm). Helmets and elbow and knee pads are required, so those who shun neoprene should go to another park. *Chelsea Piers Sports Center, Pier 62, West Side*

Hwy at 23rd St (212-336-6200). Subway: C, E to 23rd St. For information on classes and session times, go to [www.chelseapiers.com](http://www.chelseapiers.com).

### 108

This Upper West Side park was born in 1995, after the city, the Salvatori Educational Center and a group called Built Environment teamed to replace a drug-infested playground. "Prior to this, parents wouldn't even take their kids near the shaded plot of land," says Andy Kessler, a skateboarder who helped assemble the project. That first season, more than 3,000 bikers, boarders and inline-skaters registered, and attendants have kept it exciting ever since with an annual reconfiguration of the layered-steel ramps. Skaters here can make tracks on a quarter pipe, a wall ride and a small pyramid box, plus a 40-foot-wide miniramp and a 24-foot-wide vertical ramp. "It's a mellow environment with open, flat space and ramps that are a good size to learn on," Kessler says. Helmets are required; 17 and under must have a parent-signed release form. Users pay \$2 to hang from noon to dusk. *Riverside Park at 108th St (212-496-2006). Subway: 1 to 110th St—Cathedral Pkwy. The skate park is at the bottom of the hill, near the water.*

### Owl's Head Park

Nestled deep in Bay Ridge, Brooklyn, Owl's Head is the newest addition to NYC's skateboarding scene. It's furnished with not only a street course but also two five-foot-deep bowls linked by spines to a nine-foot-deep, peanut-shaped bowl complete with tiles and coping. The street course mixes cement and wooden banks with transitions, hips and pyramids,



FREE RIDE You won't pay a penny to catch air (or surf the pool) at Brooklyn's Owl's Head Park.

all ranging from two to seven feet high. Brooklyn resident and skateboarding pro Bobby Poles calls the park a "hassle-free environment," and the laid-back vibe makes it popular—on any given day, a handful of seasoned rippers gather to ride the bowls. Parents must sign releases for kids under 18, and helmets are required for all riders. Owl's Head is open from noon to dusk daily, and has three-hour alternating schedules for bikes and boards; for session times, go to [www.nyc.gov/html/dpr/](http://www.nyc.gov/html/dpr/) and type in "Owl's Head." Not only is this one of the East Coast's better parks, but the skateboard gods also made it free. *Owl's Head Park, 68th St at Colonial Rd, Bay Ridge, Brooklyn (no phone). Subway: R to Bay Ridge Ave.*